

Office of Developmental Programs Update for The Provider Alliance

Kristin Ahrens, Deputy Secretary

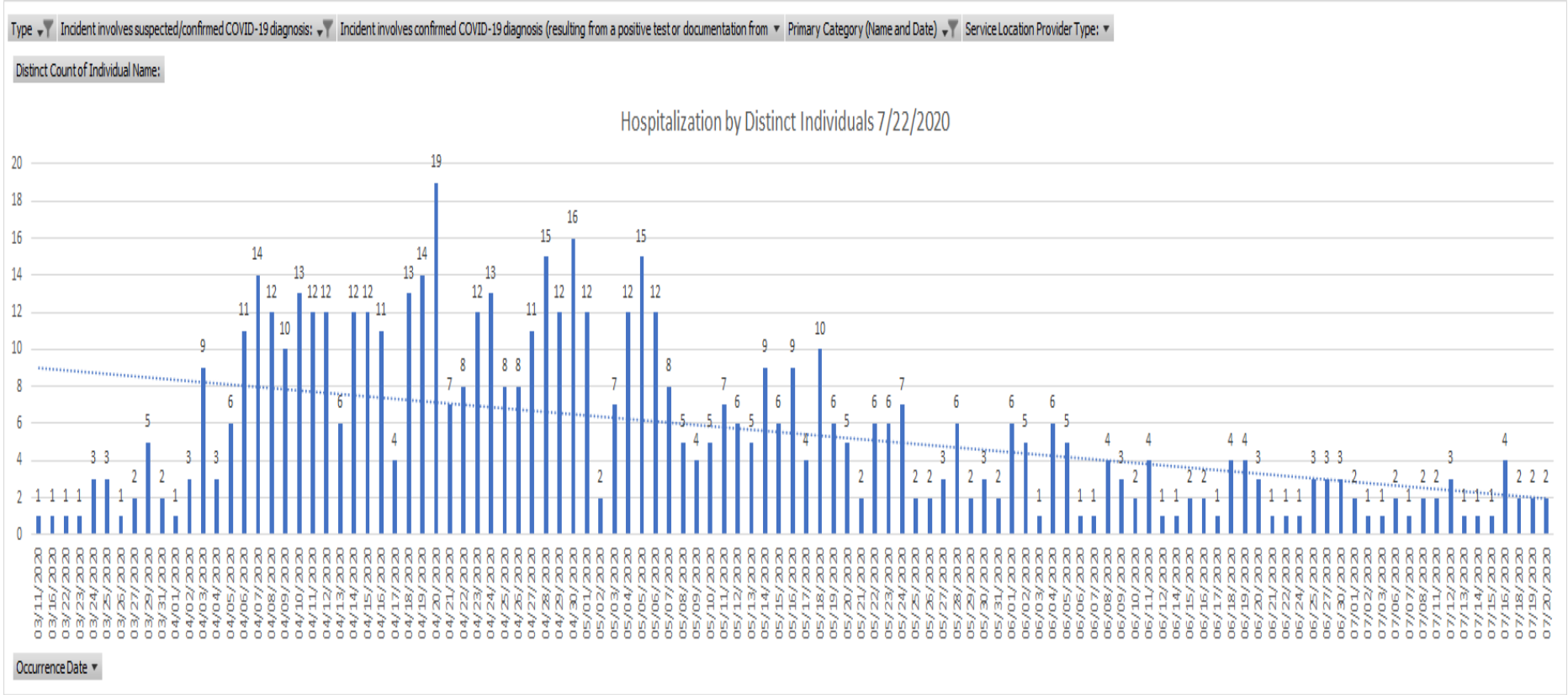
July 24, 2020

Cumulative COVID-19 Data ID/A Community System Including Private ICFs

Data Extraction 7/22/2020

	Individuals				Staff	
ODP Region	COVID-19 Suspected	COVID-19 Confirmed	Tested Negative	Deaths	COVID-19 Suspected	COVID-19 Confirmed
SE	208	810	484	87	183	960
NE	50	123	110	11	55	162
Central	75	77	177	11	125	70
Western	173	93	359	12	448	179
Statewide Total	506	1,103	1,130	121	811	1,371

Hospitalizations



ODP 2nd Appendix K for ID/A Waivers

- Approved 7/23/2020
- All Appendix K flexibilities for ODP will expire on March 10, 2021
 - ✓ DSP coverage in hospital settings expanded for non-COVID related hospitalizations effective 7/1/2020
 - ✓ CPS retainers 3 x 30 day episode and attestation required
 - ✓ PPE coverage for participants under specialized supplies (for participant, unpaid caregivers)

Funding

- CARES Act FAQs and expense reporting
- PA Hazard Pay Grants – DCED
 - FAQ forthcoming
- Provider Relief Fund
- CPS Retainers – Appendix K

Upcoming

- CPS Testing Guidance
- Regional Response Health Care Programs (RRHCPs)
- Guidance on Specialized Supplies, PPE
- Guidance on DSPs in hospital settings
- Operational Guidance on Appendix K
- Updating 'At-A-Glance'

Adult Autism Waiver Renewal

- Current approval period for AAW ends on June 30, 2021.
- For the renewal, ODP will be aligning service definitions, qualifications with the ID/A waivers as much as possible
 - Achieve efficiencies
 - Expansion of provider pool in AAW and access to services for individuals and families.

ISAC Everyday Lives Recommendation #14

Racial Equity

- Recognition of need to remedy ISAC representation
 - Evaluate organizations represented on ISAC
 - Organizations evaluate designated representatives to ISAC
- Workgroup formed to draft recommendation and strategies
 - Data analysis
 - Discussion with people impacted

Outcome	Research Question
Access to Services	Do ODP enrollees from underserved and underrepresented groups experience delays in access to service prior to waiver enrollment, overall, and by waiver, lower amounts of service, and/or a distinct array of services, compared to white enrollees?
Health Conditions	Do documented health conditions among ODP enrollees vary by race/ethnicity?
Mortality	Do mortality risk and rate differ across ODP enrollees who are White versus enrollees from other racial/ethnic groups?
Restraint Use	Does the use of restraints differ across ODP enrollees who are White versus enrollees from other racial/ethnic groups?
Employment	Do enrollees across racial and ethnic groups access employment services at the same rates? Are competitive integrated employment outcomes differenc by race and ethnicity?
Law Enforcement	Are there differences in interaction with law enforcement for enrollees across racial and ethnic groups?
Service Settings	Are there difference in service by setting (private home, residential, ICF) by race and ethnicity?
Abuse/Neglect	Are there differences across racial and ethnic groups in experiencing abuse/neglect?