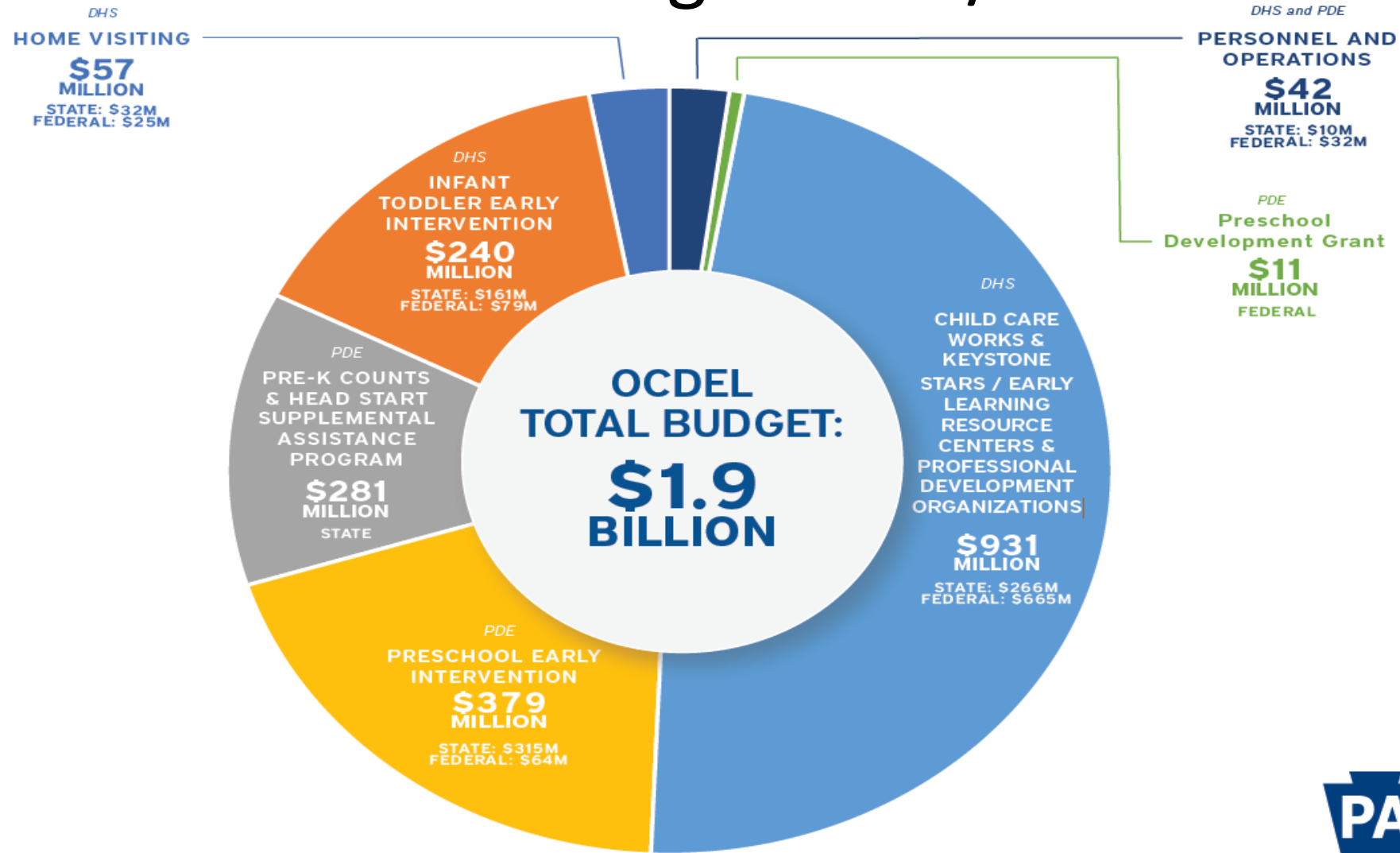


Office of Child Development and Early Learning (OCDEL)



OCDEL Budget 2019/20



Early Learning Resource Centers



www.raiseyourstar.org

Child Care Subsidy (Child Care Works)

- Work 20 or more hours a week - or-
- Work 10 hours and go to school or train for 10 hours a week
- Family's annual income is 200% or less of the FPG
- Apply at www.compass.state.pa.gov or contact the Early Learning Resource Center.



Head Start and Early Head Start

- Head Start: Families with preschool aged children
- Early Head Start: Families with children under age three, and pregnant women.
- At or below federal poverty limit
- Provided at no cost to eligible families.
- Contact the Early Learning Resource Center for more information



PA Pre-K Counts

- Quality half-day & full day pre-kindergarten for 3 & 4 year olds in Pennsylvania
- Children 3-entry age of Kindergarten
- 300% of federal poverty limit
- PA Pre-K Counts is provided at no cost to eligible families.
- Visit www.findchildcare.pa.gov or contact an Early Learning Resource Center



Keystone STARS

- Rates child care programs, 1-4 STARS
 - State regulations for safety
 - Staff education
 - Classroom/Learning environment
 - Including families and the community
 - Leadership and management
- The more STARS, the higher the quality!
- Visit www.findchildcare.pa.gov or contact an Early Learning Resource Center

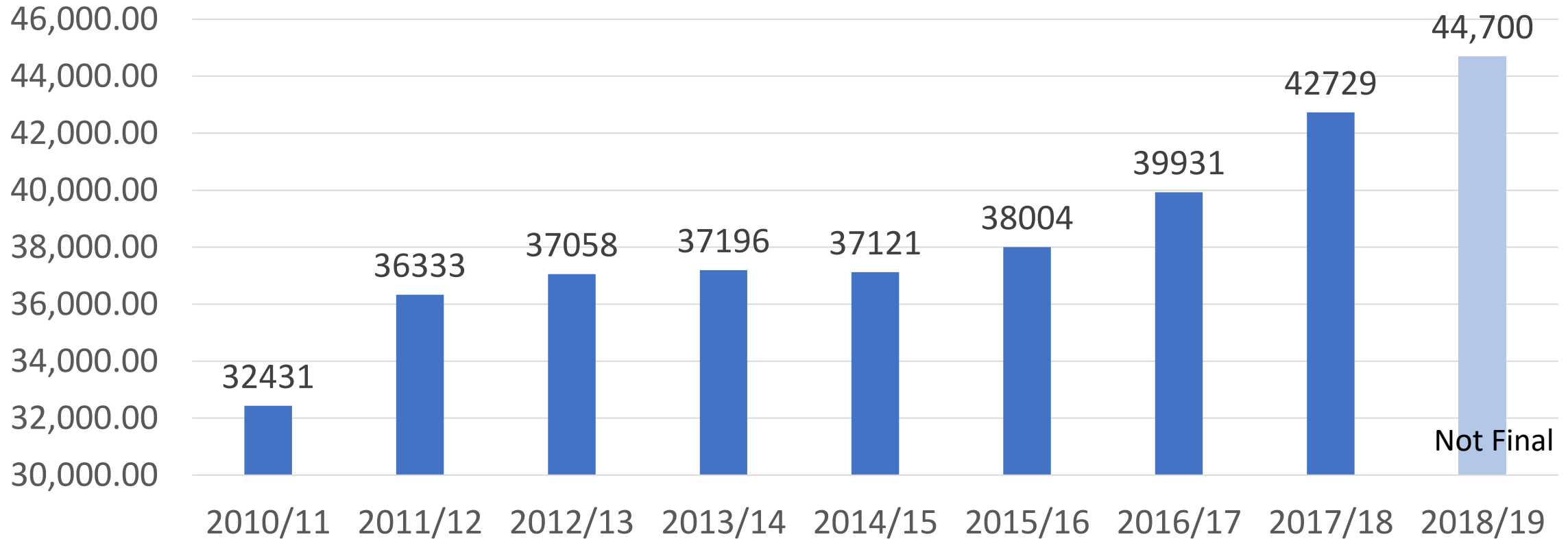


Early Intervention

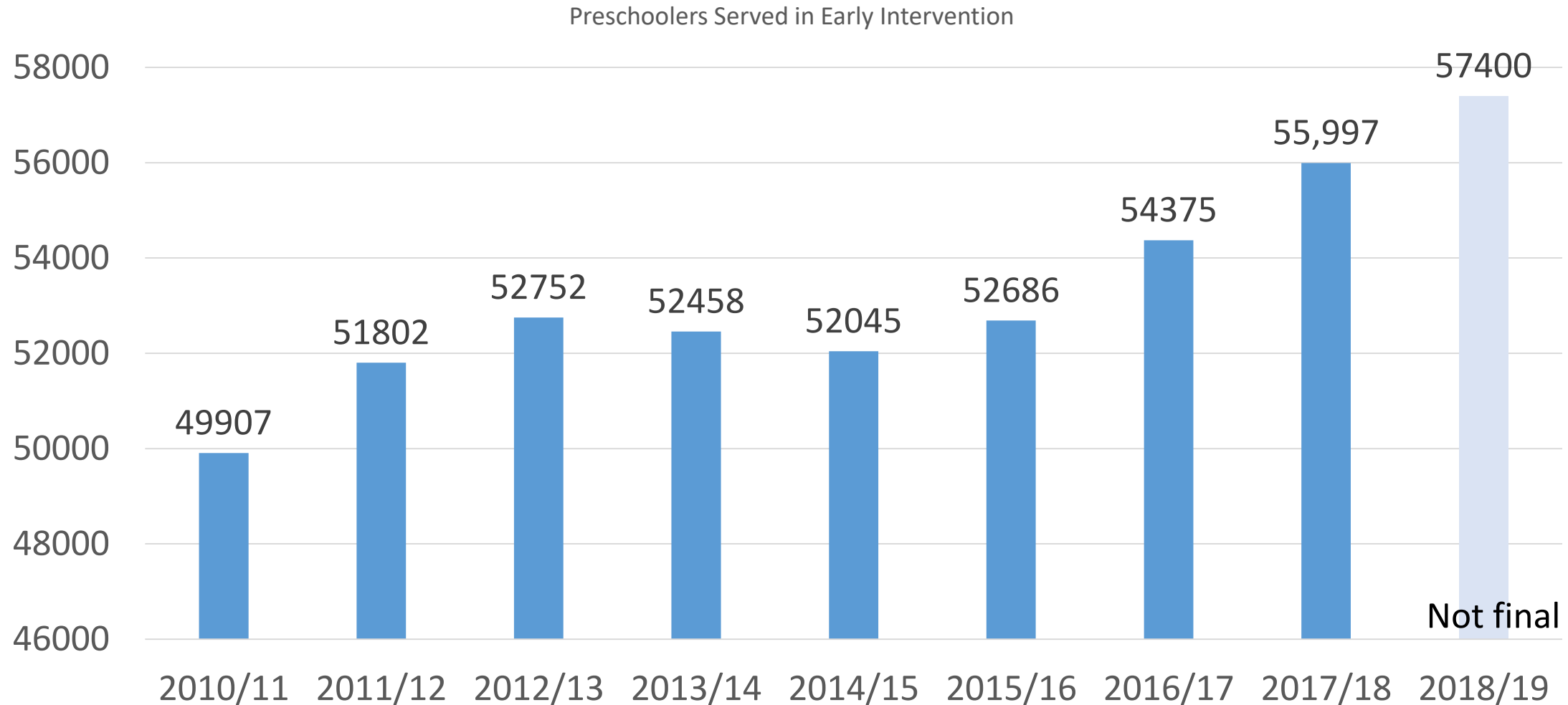
- Birth to age five with developmental delays or disabilities.
- Services and supports provided at no cost to families.
- Call CONNECT Services toll-free at 800-692-7288 or email connecthelp@tiu11.org.
- Can also contact the Early Learning Resource Center.



Infants and Toddler Served in Early Intervention



Preschoolers Served in Early Intervention



Family Centers

- Various community-based services, such as:
 - Parenting classes
 - Adult education & job training
 - Family activities
- Provided at no cost to eligible families.



Evidence-Based Home Visiting

- Serve pregnant and parenting families
 - Early Head Start
 - Health Families America
 - Family Check-Up
 - Nurse-Family Partnership
 - Parents As Teachers
- Provided at no cost to eligible families.
- Contact the Early Learning Resource Center for more information or to access home visiting programs.



PA's Promise for Children

- Resources for families
 - Family-friendly materials which align with the PA Early Learning Standards
 - Free monthly newsletters for families
- Information about their child's developmental milestones
- Early Learning GPS

www.papromiseforchildren.com



Thank you!